

Name: \_\_\_\_\_

Think about it.

Do you prefer being in a **social** group or being alone?

---



---



---



---

What makes each of the following activities **social**?

Group

What makes it *social*?

chorus

construction crew

baseball team

ant's nest

1

131A

## social

Many animals are **social**. They live together in organized groups.



2

132A

## exchanges

Some people have seen **exchanges** in which dolphins give and receive food.



Think about it.

On what special days are there often exchanges of gifts?

---



---



---



---

Read these sentences. Decide which of them describe exchanges.

	Yes or No	Why?
Maria gave Julia a sandwich. Julia gave Maria a yogurt.		
I gave the squirrel a bread crust.		
Kim gave the cashier ten dollars for the book.		

3

133A

**excess**

People harvest only **excess** honey from a beehive. The bees need the rest to live.



Think about it.

Is it good or bad to have **excess** toys?

Why or why not?

---



---



---



---



---

Decide which of the following show **excess** amounts. Explain your answers.

	Yes or No	Why?
12 sandwiches for 3 people		
1 computer for 5 people		
A 10-room house for 2 people		
2 books for 10 students		



4

134A

## reinforce

Elephants **reinforce**, or strengthen, their bond as they protect their young.



Think about it.

How would you **reinforce** a button that is hanging loose?

---



---



---



---



---



---

Match each item with a suggestion of how to **reinforce** it.  
You may use each method of reinforcement more than once.

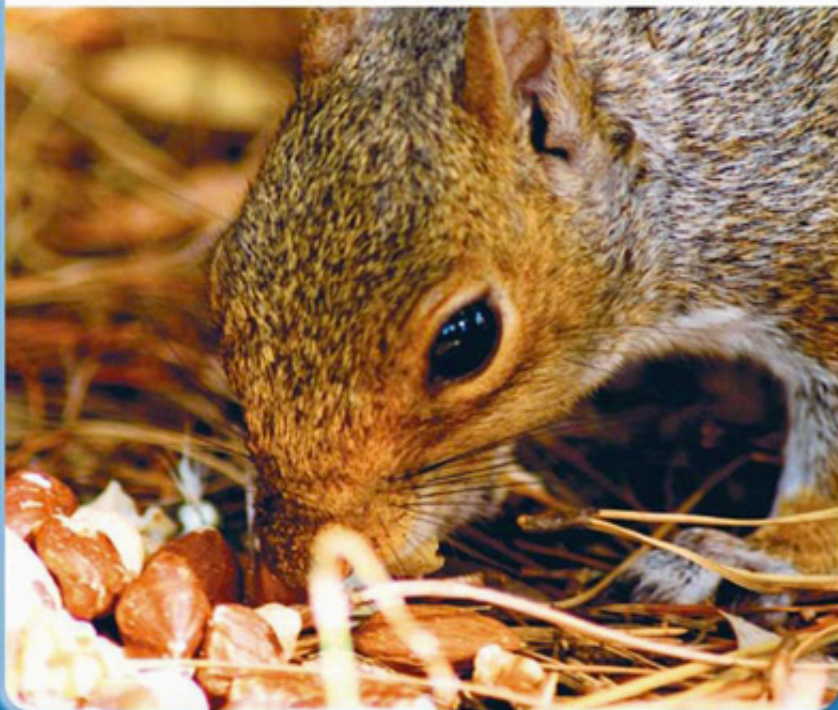
Item	What's a good way to reinforce it?
A torn page in a book	Needle and thread
A torn shirt	A screwdriver
A loose doorknob	A stick and string
A sagging plant	tape

5

135A

## storage

Squirrels save food in **storage**. They can get food from that place later.



Think about it.

What kinds of **storage** do you have in your bedroom?

---



---



---

Think about the different kinds of **storage** that would be needed for different items. Complete the chart below. Write the best place to store each item.

Item or items	What is the best kind of <i>storage</i> ?
books	
Winter clothing	
Ice cream	

6

136A

# transport

Working together is handy when a group has to **transport**, or move, a big object.



Think about it.

How does your school transport you and your classmates for field trips?

---



---



---

Think about things that need to be transported. Complete the chart below. In each column, list various items to transport by the means shown in the heading.

### How to Transport

Bicycle	Truck	Airplane



7

137A

## chamber

This wasp is working  
in a hollow **chamber**  
of its hive's nest.



Think about it.

Which **chamber** in your house do you use for sleeping? Is that **chamber** only for sleeping?

---



---



---



---

Read each sentence to yourself. Then, decide if the word **chamber** makes sense.

	Yes or No
I will finish my _____ when I get to school.	
I was invited into a secret _____ to examine the jewels.	
We heard him _____ up the stairs.	
She keeps her pens in a separate _____ of her desk.	

8

138A

**scarce**

Drinking water for wild animals is sometimes **scarce**, or hard to find.



Think about it.

Is snow **scarce** or plentiful where you live? How about sunshine?

---



---



---



---

Read the list of items below. Circle the ones that are **scarce** in your community.

Ski slopes	stores
buses	restaurants
Amusement parks	Trees
Pay phones	Cars
Zebras	buildings



9

139A

## obstacles

There are no **obstacles** blocking the entry to this rabbit's home.



Think about it.

What **obstacles** could get in the way of students doing their best in school?

---

---

---

---

---

Answer the questions below. Be prepared to share your answer!

Why is it dangerous to block doorways with **obstacles**?

What kinds of **obstacles** might get in the way of someone's achievement of his or her goals?

## transfers

Humankind **transfers**,  
or passes along,  
information through  
teaching.



Think about it.

Think about how the average student transfers homework to a teacher. Is there more than one way to do this?

---



---



---



---

Complete each of these sentences. Be prepared to share your answers!

A postal worker transfers \_\_\_\_\_ from \_\_\_\_\_ to \_\_\_\_\_.

A pizza delivery person transfers \_\_\_\_\_ from \_\_\_\_\_ to \_\_\_\_\_.

Sometimes a student transfers \_\_\_\_\_ from \_\_\_\_\_ to \_\_\_\_\_.